

# Counted Cross Stitch Charts for East and West Windows

## First United Methodist Church

### Round Rock, Texas



*East Window*



*East Window Cross*

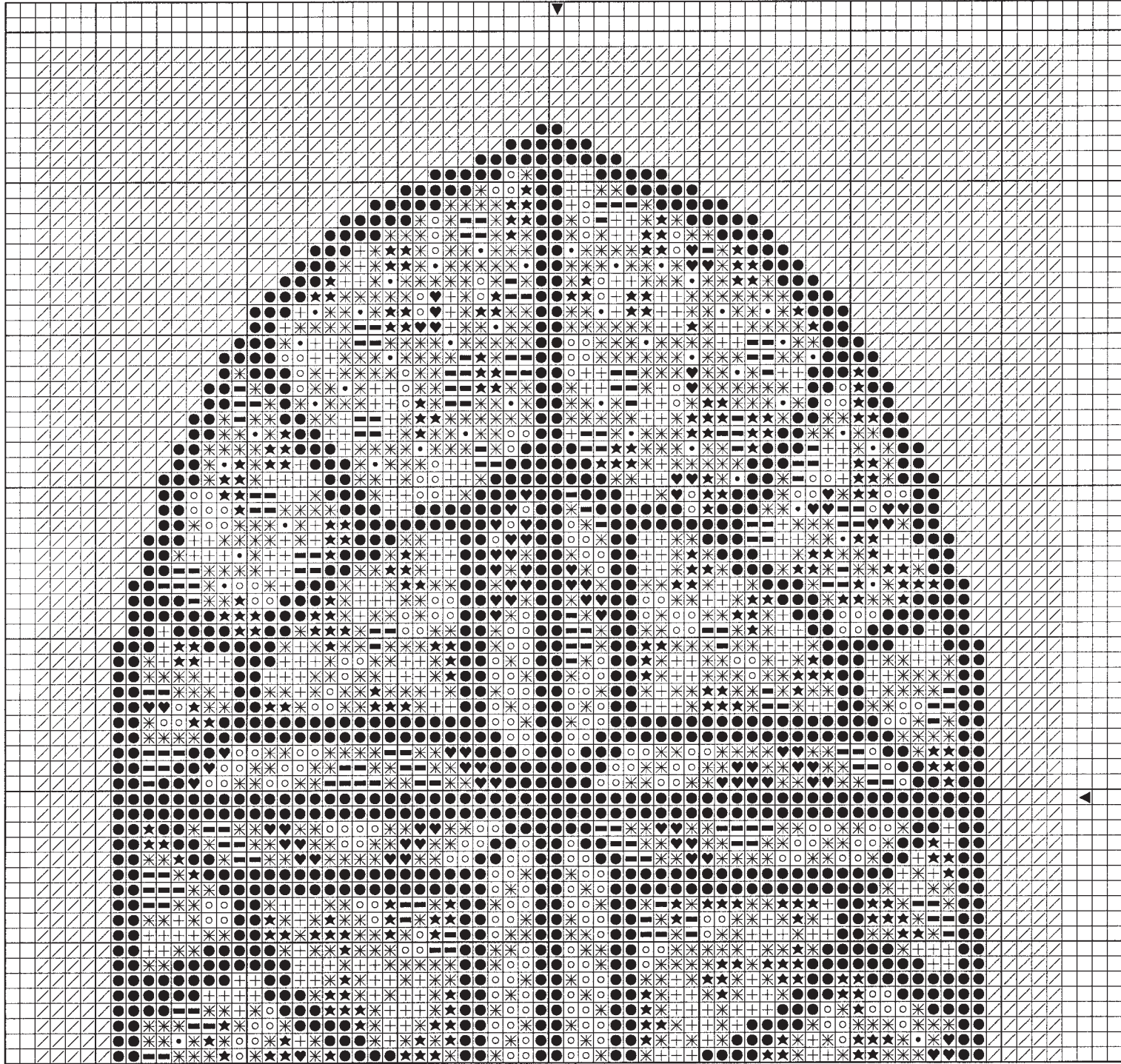


*West Window*

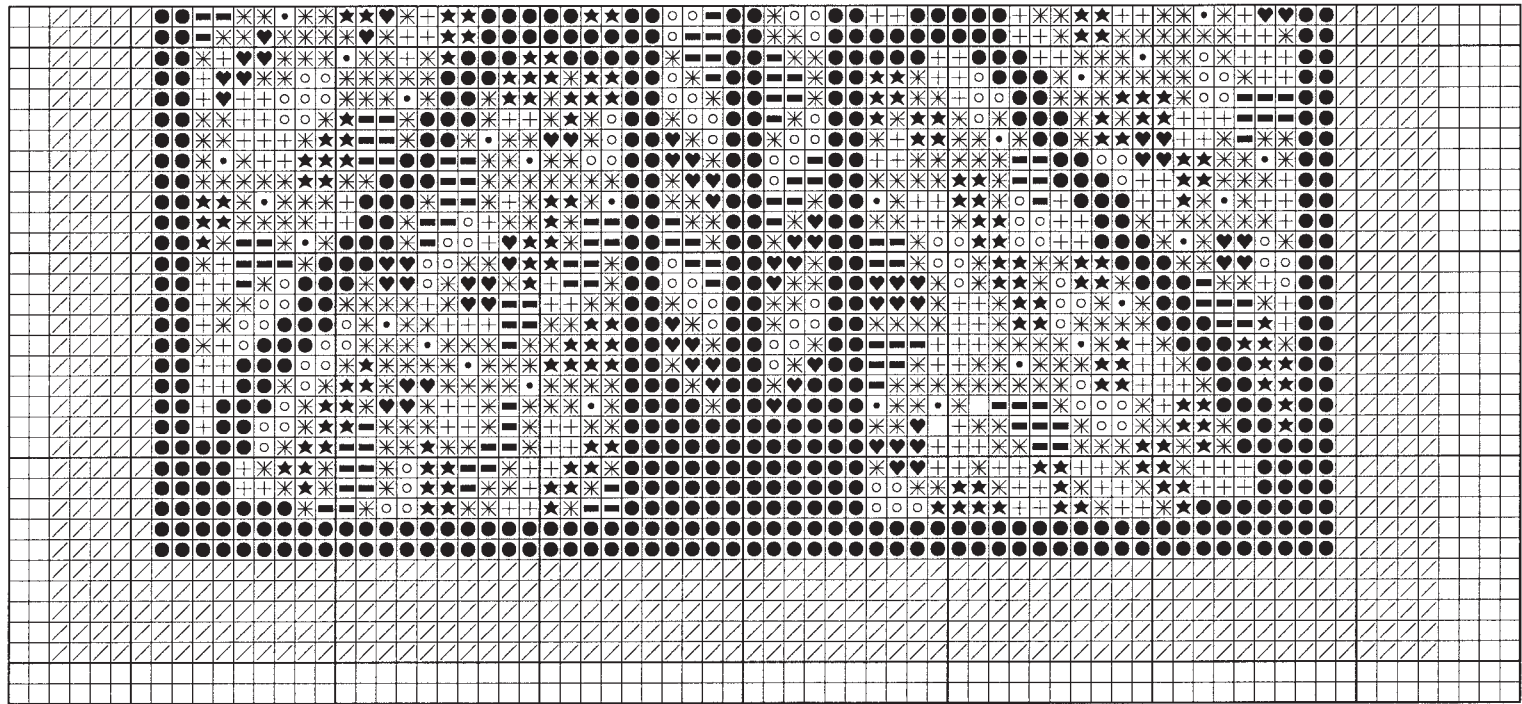
Upon entering the sanctuary, one immediately feels a sense of God's presence there. The architectural design draws the eyes upward to a pair of magnificent stained glass windows, each with its own design, and both functioning together as spiritual bookends in that holy space.

This pack includes charts and instructions for cross stitching the east and west stained glass windows of the sanctuary of First United Methodist Church, Round Rock, Texas. Stitchers supply their own fabric and floss, and are invited to finish their projects as desired.

This chart pack is donated to the members of First United Methodist Church, Round Rock, Texas, by Posy and Tom Lough, so that they may enjoy the beauty of our church windows through the medium of needlework. Special thanks to church member Kim Hollifield (kontent@flash.net) for finishing the sample ornaments shown.







East Window Chart Bottom

© 2016 The Posy Collection. www.posycollection.com

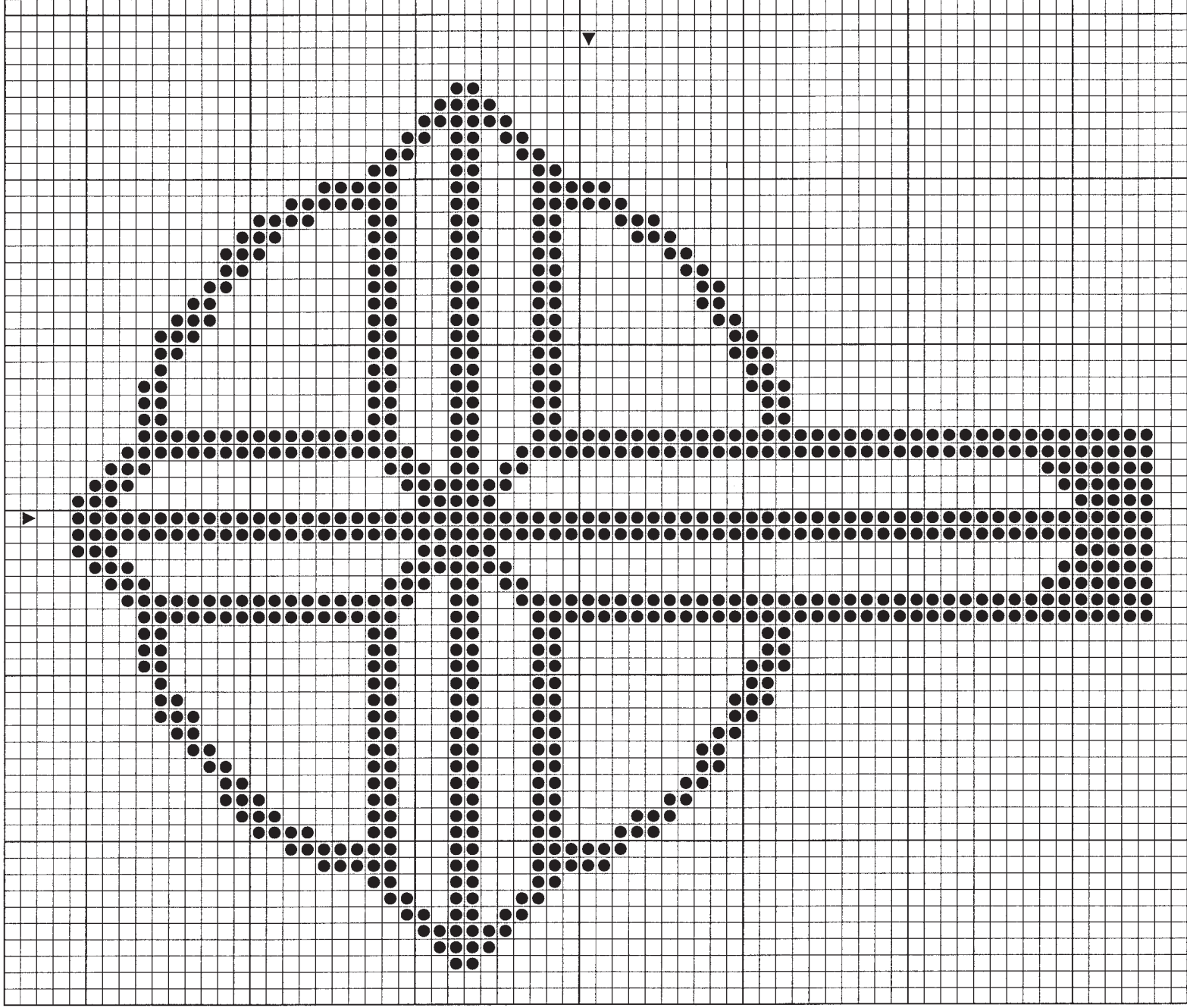
All cross stitch: Use two strands of DMC floss.

- 726 yellow
- ♥ 321 red
- ⊕ 334 light blue
- ★ 796 dark blue
- white
- 3807 purple
- ecru
- ✱ 310 black
- / 729 gold

Stitched size

18 count fabric: 3¾" by 5½"

14 count fabric: 5" by 7"



© 2016 The Posy Collection. [www.posycollection.com](http://www.posycollection.com)

### East Window Cross

**All cross stitch:** Use two strands of DMC floss.

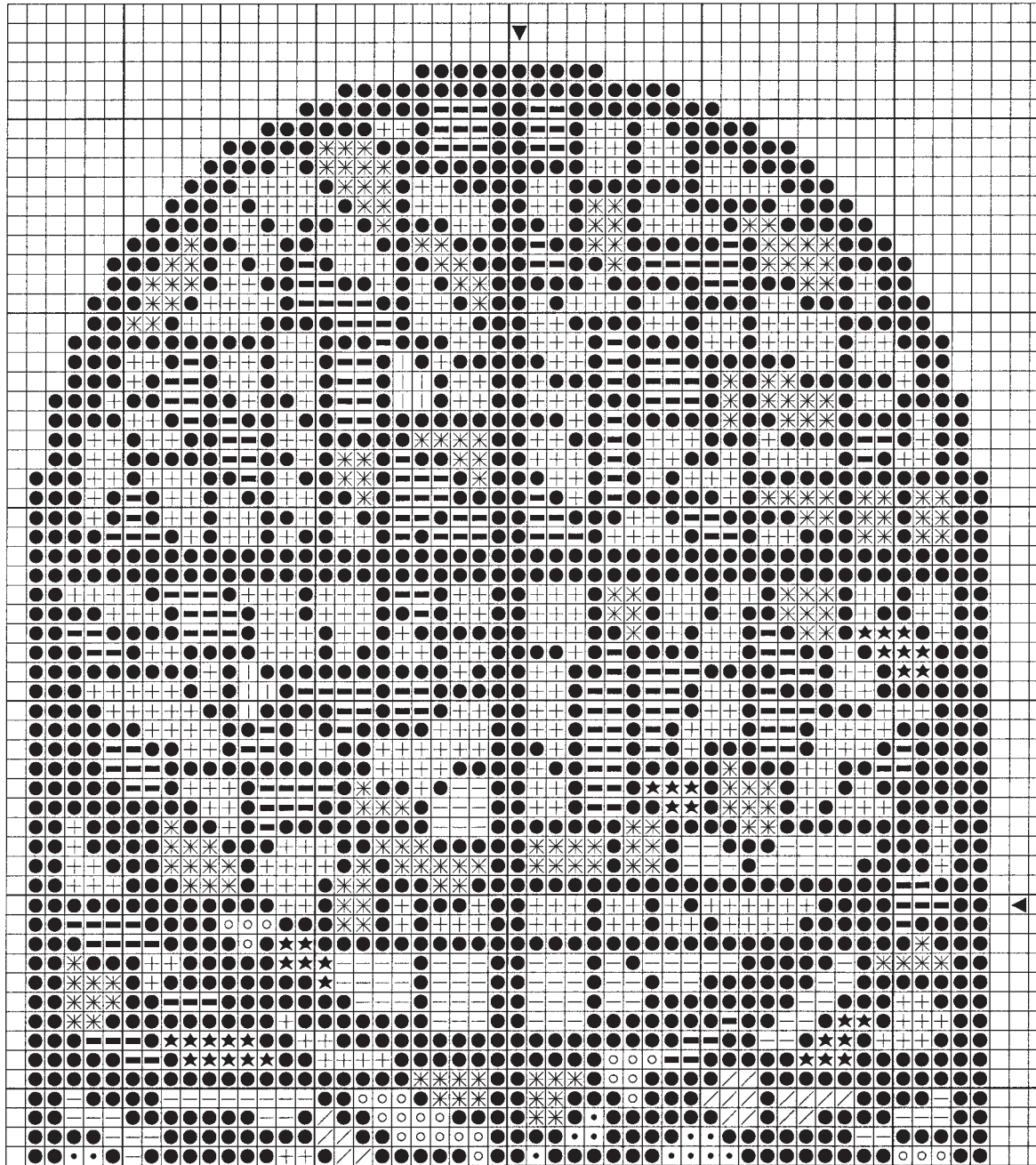
Stitched size

18 count fabric: 3¼" by 3¾"

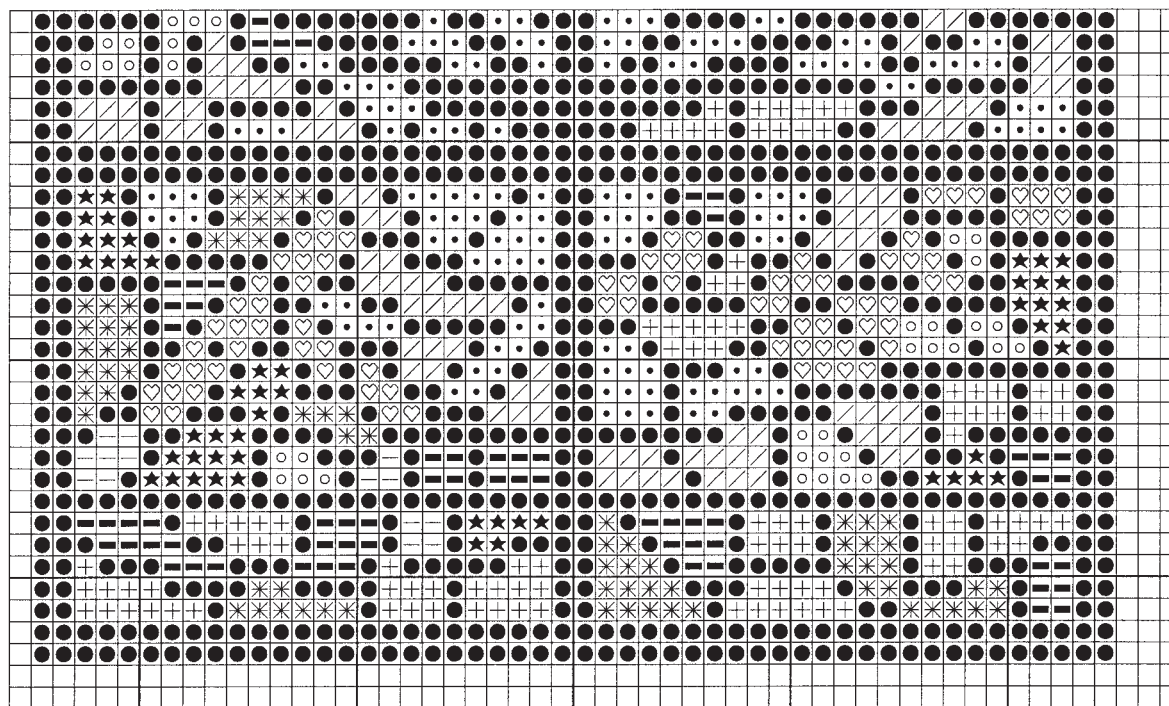
14 count fabric: 4" by 5"

● 815 dark red

PC-1824  
4/6



West Window Chart Top



West Window Chart Bottom

© 2016 The Posy Collection. www.posycollection.com

**All cross stitch:** Use two strands of DMC floss.

- 310 black
- ★ 321 red
- + 334 light blue
- | 703 green
- / 726 yellow
- \* 796 dark blue
- 946 orange
- 3746 lavender
- ♡ 3779 peach
- 3807 purple
- white

Stitched size

18 count fabric: 3" by 5"

14 count fabric: 3¾" by 6½"